

SECRET/NOFORN

PROJECT SUN STREAK

WARNING NOTICE: INTELLIGENCE SOURCES AND METHODS INVOLVED

PROJECT NUMBER: 6033

SESSION NUMBER: 001

DATE OF SESSION: 29 Sep 89

DATE OF REPORT: 2 Oct 89

START: 1400

END: 1445

METHODOLOGY: Sol

VIEWER IDENTIFIER: 011

1. (S/NF/SK) MISSION: Access and describe site and activity at location being visited by beacon. Locate site on a Ft. Meade map.
2. (S/NF/SK) VIEWER TASKING: Access beacon.
3. (S/NF/SK) COMMENTS: Viewer successfully accessed and reported elements of site. Map dowsing proved unsuccessful.
4. (S/NF/SK) EVALUATION: 2

HANDLE VIA SKEET CHANNELS ONLY

SECRET/NOFORN

CLASSIFIED BYH: DIA (DT)  
DECLASSIFY: OADR

SECRET

WORKING PAPER

P BEACON

D890929

VOII

SOI

MSOLD

T1400-1445

### SUMMARY OF INFORMATION

PARAGRAPHS 1-4, ARE KEYED TO THE NUMBERED SKETCHES ON PAGE TWO OF THIS REPORT.

1. THE FIRST IMPRESSION WAS OF A BIG, ROUND, DARK EYE, I COULD SEE NOTHING ELSE, JUST AN EYEBALL.

2. AS I TURNED TO LOOK IN ANOTHER DIRECTION I WAS BLINDED BY A BRIGHT LIGHT, OR THE SUN. THIS TOOK ME BY COMPLETE SURPRISE AND I HAD TO TAKE A SHORT BREAK UNTIL I GOT MY "VISION" BACK.

3. UPON REACQUIRING THE TARGET I WAS DRAWN TO A LARGE FOUR-LEGGED ANIMAL THAT LOOKED LIKE AN ELK, OR A COW, LICKING IT'S CALF.

4. AT THIS POINT INTO THE SESSION, I WAS OVERCOME BY LOUD NOISES OF TRUCKS AND HEAVY EQUIPMENT. THERE WAS ALSO AN OVERWHELMING ODOR OF HOT ASPHALT/TAR. IT APPEARED AS IF THERE WAS RESURFACING OF A ROAD, OR PARKING LOT IN PROGRESS NEARBY.

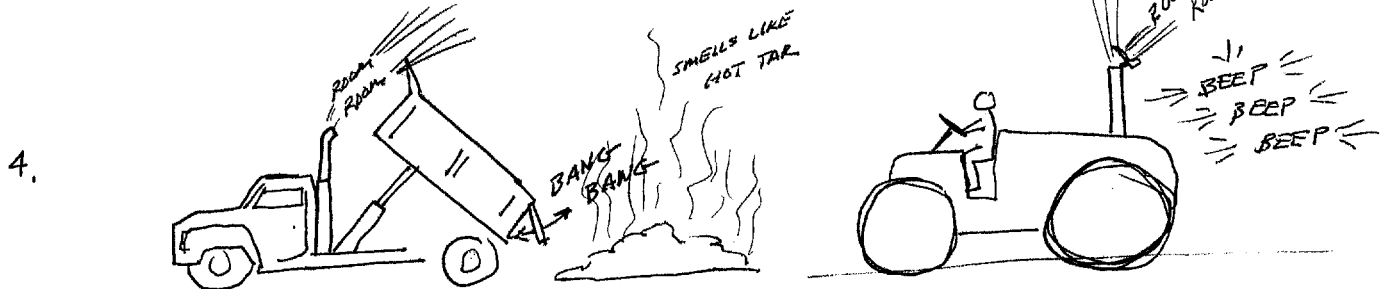
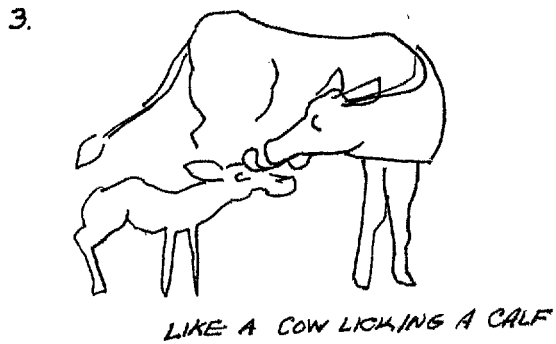
5. "BLIND" MAP DOWSING PLACED THE BEACON IN THE AREA OF BURBA LAKE, ON FORT MEADE.

HANDLE VIA SKEET CHANNELERS ONLY

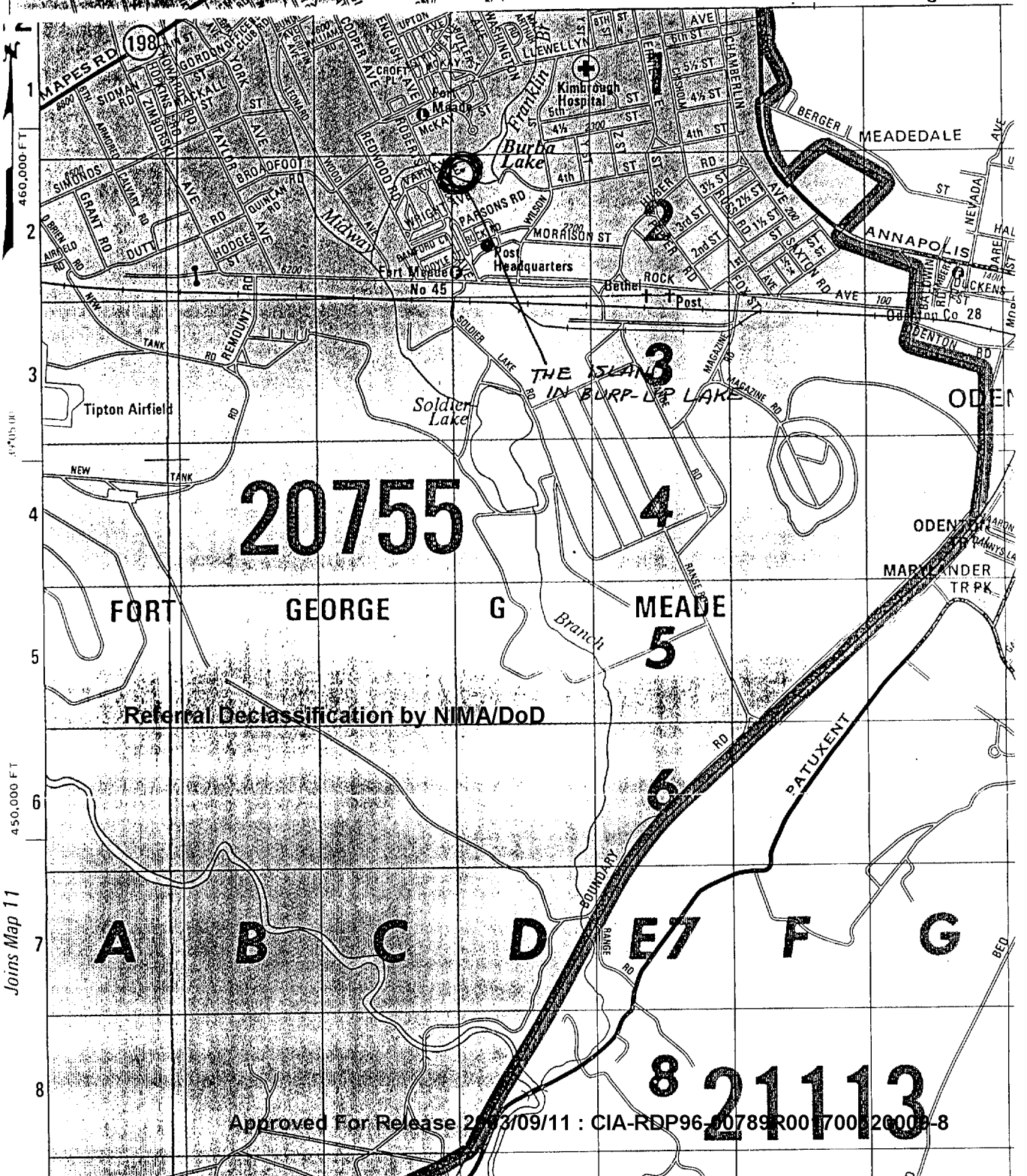
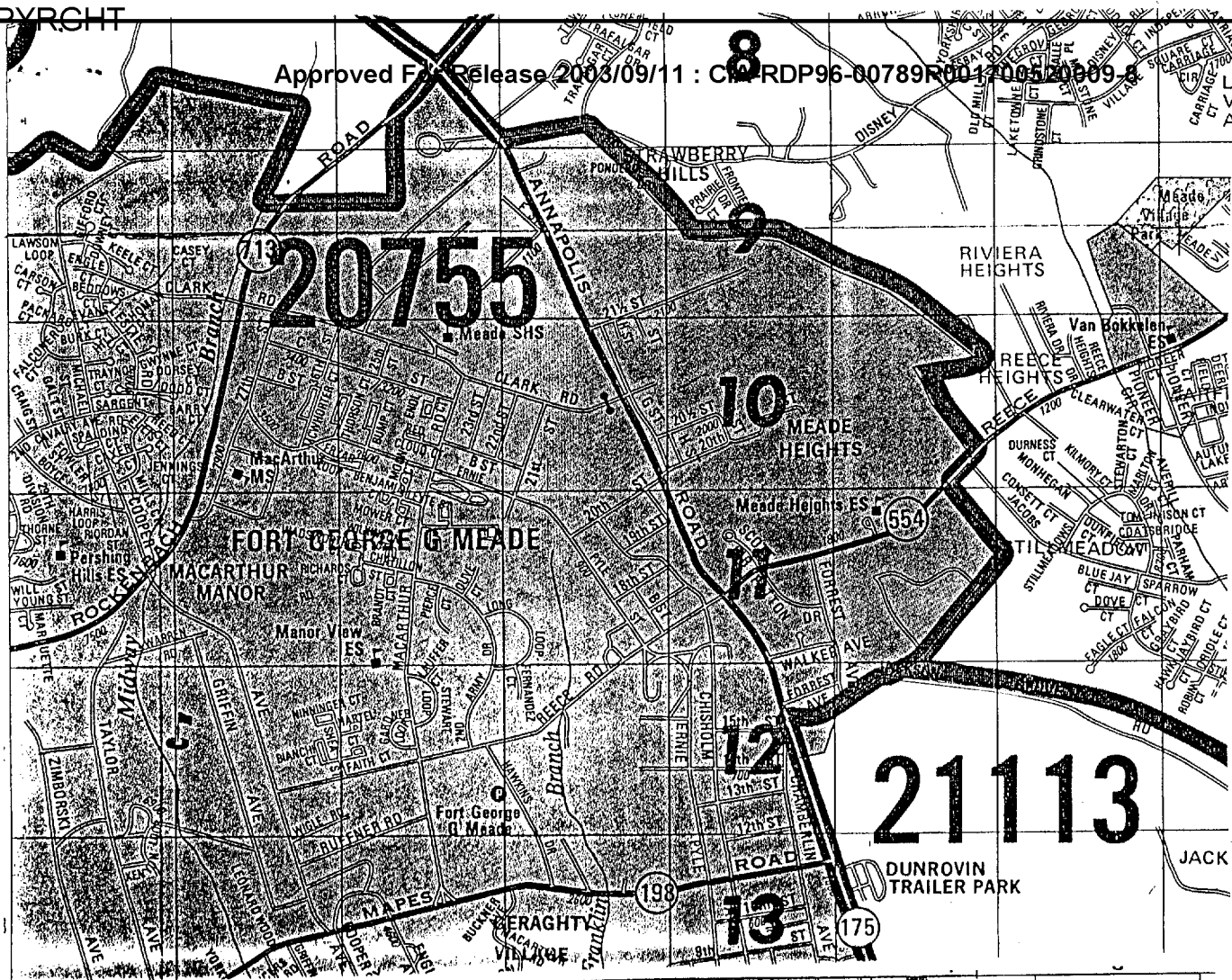
SECRET

PBRV  
D890929  
VOII  
SOI  
MSOLO  
T1400-1445

<sup>M</sup>  
SUMARY OF INFORMATION



BANGING, BOOMING, BEEP-BEEP, ROOM-ROOM,



Referral Declassification by NIMA/DoD