

~~SECRET~~

INSCOM
GRILL FLAME
PROGRAM

SESSION REPORT

CLASSIFIED BY: MSG, DAMI-ISH
051630Z JUL78

REVIEW ON: Jan 2002

NOT RELEASABLE TO FOREIGN NATIONALS

ORCON

~~SECRET~~

GF-008-82

Cy

~~SECRET~~

SUMMARY ANALYSIS
REMOTE VIEWING SESSION 851

1. (S/NOFORN) This report documents a remote viewing session conducted in compliance with a request for information.
2. (S/NOFORN) The protocol used for this session is detailed in the document GRILL FLAME Protocol, AMSAA Applied Remote Viewing Protocol (S), undated.
3. (S/NOFORN) During the second phase of the session the remote viewer was interviewed concerning his impressions. At TAB A is a drawing made by the remote viewer and his narrative. At TAB B is the target cuing information provided to the remote viewer immediately prior to the session.
4. (S/NOFORN) The remote viewer's impression of the target is provided as raw intelligence data, and as such, has not been subjected to any intermediate analysis, evaluation or collation. Interpretation and use of the information is the responsibility of the user.

NOT RELEASABLE TO FOREIGN NATIONALS

ORCON

~~SECRET~~

~~SECRET~~

TRANSCRIPT

REMOTE VIEWING SESSION 851

TIME

#72: This will be a remote viewing session for 26 January 1982 with a start time of 1005 hours.

It is now 1005 hours. In our last session you described a lake and a building on the shores of the lake. I want you to turn to that location, concentrate on the building and tell me when you are ready to report.

PAUSE

#06: Okay.

#72: Describe for me who is in the building now.

#06: Okay. Just a minute.....
There's three. The General and three men. Three men are..early 30's. Two wear heavy beards. Man without beard is going bald... mid-30's....Have them sitting at a table. General is handcuffed. One hand to a metal pipe. Pipe or rail of some kind. Closed room, second floor.

#72: I want you to go through the building and locate the radio equipment.

#06: Okay. Just a minute.....This is very interesting. Got the..the radio looks like it's shortwave. Must be a shortwave radio. Two components. It's like in a dining room on a table, and a wire going out the door. It's a long wire. It's all set...set to broadcast...apparently, bi-directional...impression of transmit lobes...southeast, northwest.....

Impression of low power, for some reason. It's carrier, modulated carrier. No. Correct that...Carrier. Like...simplistic code of some kind...international Morse....frequency.... 10 to 12 megahertz range. Keep getting a 10 and a...I don't know...10 meg...lower part of the 10 meg band. I'm confused here. I'm getting two, four, something. Either 10,240 or it's just 2,400. Very low...low part of the HF band.

~~SECRET~~

+08 #72: Which of the three men in the building operate the radio?

#06: The youngest of the three...beard, 32... doesn't...just a minute..... He's not very good. He sort of trained himself. Like a choppy...fist characteristic on the key. Very slow and choppy.

#72: When do they know to transmit?

#06: Just a minute..... Don't get a.....don't get a schedule. Get a impression of three-letter name, three-letter word. I get a three-letter word on the radio. It's a predetermined sentence as equating three-letter words. They know when to leave the house and when not to. Have a system of drops. It's layered according to projected numbers of messages, photos. It's designed so each delivery of photo can allow....just a minute.....allow compromise of the drop.... See like 5 layers. I suspect there's going to be two more...two more information packets delivered. The next information packet will be the information on a trial and the last one will be the sentence.

+14 #72: All right. I want you to concentrate on the radio and its transmission. I want you to go back in time to 22 January, morning, 22 January A message is being received. Tell me about the message.

PAUSE

#06: (Mumble) only send a..acknowledge, response.. the message is...advisory on...I think the search area...warning. Feel like it's a warning not to go out or not to do anything. Stay put. Acknowledge this, and also...also...just a minute.....I also get (phonetic) a word for pick up or something. See some kind of package going through drops. That's all I get. It's like...brief exchange.

#72: Concentrate on the message in the radio. Backtrack to the center. Who is sending the message?

~~SECRET~~

+15 #06: Get an impression like it's a.....kind of a formal building...northeast area of Rome.... Keep...asking what the building is. I keep getting...kind of like It's not a university. But, it's a school of some kind. Northeast, Rome. Some connection between that building and leader of this group, or this faction of the group.

+20 #72: All right..... Describe for me when he will transmit again.

#06: Okay. Just a minute..... It's going to be like.....7 February. I see a picture of 7 February, February. And, it's going to be like around noon time. See noon time. This time 'cause nobody works..... Very short, no more than, maybe, 15 letters.

#72: I now want you to return to 26 January. Return and concentrate on the building at the lake.

#06: Okay.

#72: In the last session you reported there was a resort type area at the lake.

#06: That's correct.

#72: I want you to concentrate on that resort area. Describe, for me, how that area is referred to.

PAUSE

+23 #06: It's like a mountain lake named after a Saint. Keep getting like Saint Martin...it's not..... it's an Italian name, but I'm not sure if that is correct. Saint Martin, or Saint Michaelor I think Saint Martin. But, I keep getting mountain connected...like Saint Martin.. and mountain resort...This is up in the mountain to the lake.

#72: Why do the people, describe why they come to the resort.

#06: Okay. Just a minute. Saw springs of, fresh water springs of some kind. It's for medical reasons. Also, there's a reputation about the place. It has no outside influences. Can get a cottage with no phones, no newspapers...nobody to bother you. Isolated. Seems to be isolated by design.

~~SECRET~~

~~SECRET~~

#72: Look at the lake. Describe the lake.

#06: Spring fed. It's...it's not...I don't see any ice. All I get is a sense of warmth. See boats. It's very deep surrounded by mountains. A lot of snow on the mountains.

+27 #72: Describe how the people at the resort refer to the lake.

PAUSE

#06: Get a mixture of sensations. Get a feeling like it's named after a rock and a color at the same time. It's not.....it would be like blue diamond, but it's not blue diamond. It's like that. Like a natural form rock and a color mixed..... I get a word ending in chite. There's like two syllables in front of it. I can't make it out. I get chite at the end or chultz..chite....

#72: All right. I have nothing further for you at this time. Is there anything you wish to add?

PAUSE

#06: No. That's all I have.

(SEE TAB A FOR DESCRIPTION OF THE DRAWING)

~~SECRET~~

TAB

~~SECRET~~

TRANSCRIPT

REMOTE VIEWING SESSION 851

DESCRIPTION OF DRAWING

#72: We will now continue with the description of the drawing.

#06: Okay. I'll describe the drawing first, and I'll talk a little bit about the other thing.

It's only one page. What I've drawn is a floor-detail of the cabin on the lake where the General's being held....which has got a...like a small hallway entrance with an upstairs on the left. Root cellar under the stairs. It's like a storage room down in the ground. First door on the left is a dining and kitchen area. That's where the radio is, sitting like against the window on the kitchen side. On the right is a small room and a bath.

And, the rear is like a big open deck area, and it's all glassed in on three sides, and the three men were sitting at the table. There's also, some kind of a rear exit there, as well, but it's off back where the men were on the left. The General is in a loft area which is overlooking this area inside. I don't get an impression like it's very high up. It's probably just 8 feet off the ground. Very small...loft type area, and I don't get an impression that it's normally used. It's just a storage like area, maybe. But, he's handcuffed to a metal rail or pipe or some kind of projection off the wall. That's in the upper right hand corner as you're coming in the door..... or going up the loft.

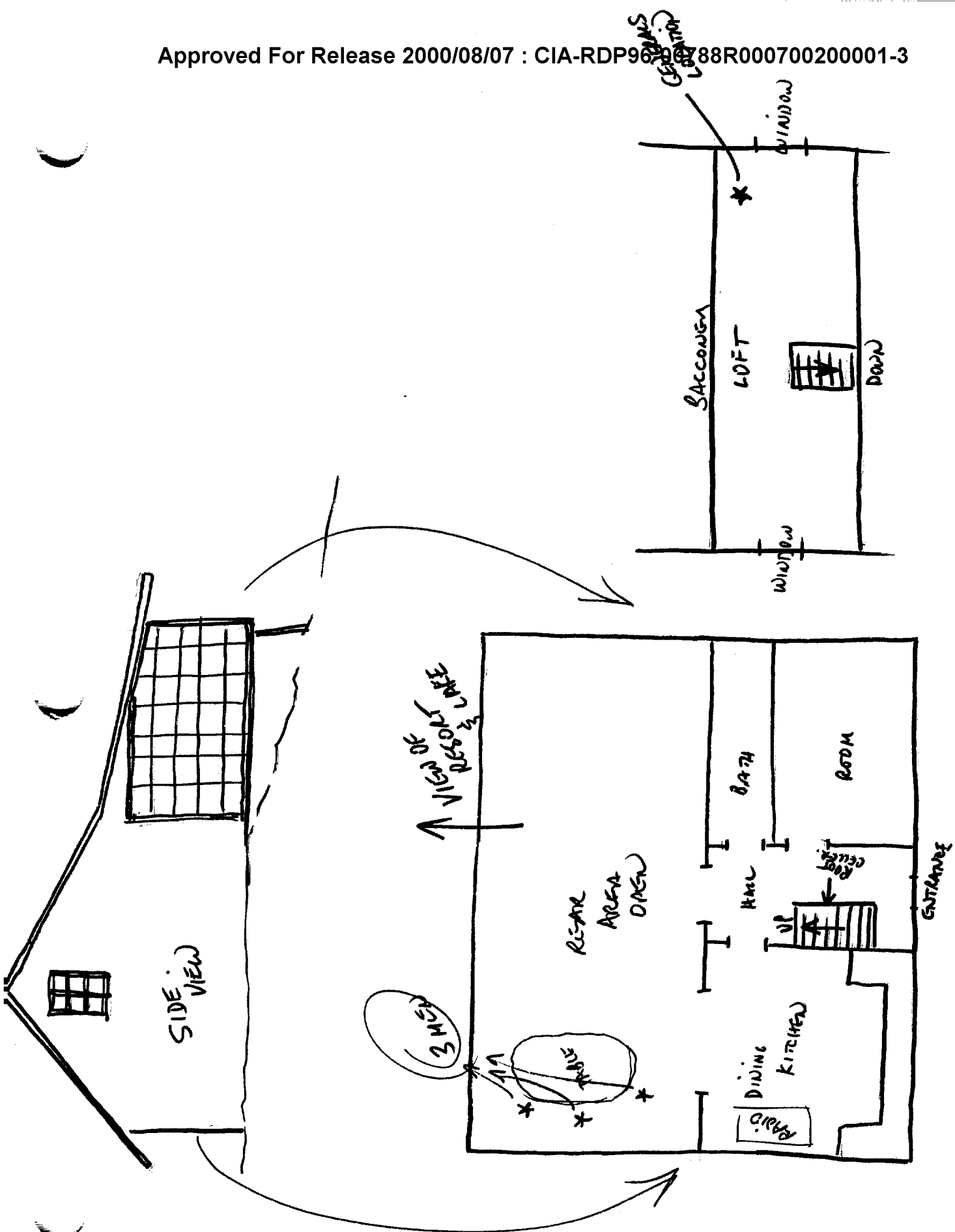
Talking a little bit about the resort. While I was drawing this cabin, I was getting an impression of some kind of springs or water type baths.... carved right out of rock in the mountain that are very old. Like, maybe, the Romans even used them. Just an impression of that. These very old baths. And, with regard to the building that houses the radio that I said was in northeast Rome...I get an impression for like a cluster of yellow buildings,

~~SECRET~~

multiple story, three story...all along a street with ...they have white trim and... something to do with school or school like institution....perhaps student housing or something, but there's a direct link to those buildings, and the leader of this particular faction..... That's all I have. That's it.

#72: You don't have anything more.....we'll terminate the session.

~~SECRET~~



TAB

~~SECRET~~

TARGET CUING INFORMATION

REMOTE VIEWING SESSION 851

1. (S/NOFORN) Immediately prior to the session the remote viewer was shown a xerox copy of a drawing completed during an earlier session. The remote viewer was also shown a photograph of an individual who was identified as BG James L. Dozier.
2. (S/NOFORN) The remote viewer was asked to return to the location in the drawing.

NOT RELEASABLE TO FOREIGN NATIONALS

~~SECRET~~

TRECCA
OR
TROECCA.

